

Access Display Group, Inc.

TEL: 800-289-1539 FAX: 877-842-5126

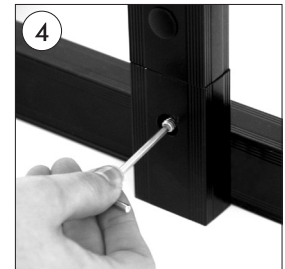
E-MAIL: customerservice@accessdisplaygroup.com

Instruction Sheet

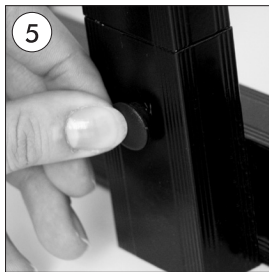
1 Tier Info Board Sign Stands (for 18" x 24" Posters)



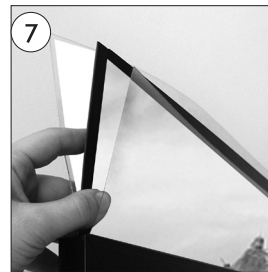
• Insert the body legs into the box profiles of base flat on surface.



• Fix the base & body by allen key.



• Put the end caps to cover the screw holes.



• Place posters against both sides of the black panel & place two anti-reflex covers on outer sides & slide them through the frame.

